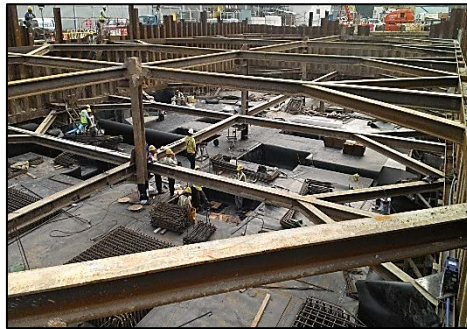


For many years, cost and time savings in construction incorporating geosynthetic are acknowledged. Classic examples are geogrid in reinforced fill structure vs retaining wall, geomembrane in containment barrier vs clay, geocomposite in drainage vs granular, geotextile in road paving stability vs gravel and geotextile mattress in coastal protection vs rock, even flexible rockfall barrier vs rigid barrier. Such applications are now recognized and shown to reduce carbon emission, complimenting goals towards sustainable construction. Talk to us on versatility and latest development. 🌴



Geogrid - Reinforced Fill Wall
NENT Landfill
October 2005



HDPE geomembrane - External Tanking
Stonecutter Island Sewage Treatment
May 2015



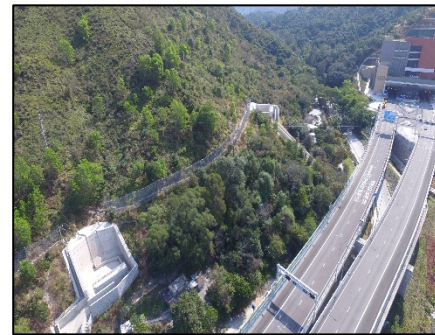
Geocomposite – Drainage layer
Ma On Shan Development
July 2021



Geotextile – Formation Stability
Anderson Road Development
August 2017



Concrete Mattress – Embankment for
Coastal Protection TKO
December 2017



Flexible Barrier – Natural Terrain
Mitigation Liantang Control Point
January 2016



G AND E COMPANY LIMITED

14/F, Kiu Yin Commercial Building,
361-363 Lockhart Road, Wanchai, Hong Kong
Tel: 2570 0103 Fax: 2570 0089

e-mail: info@g-and-e.com www.g-and-e.com

